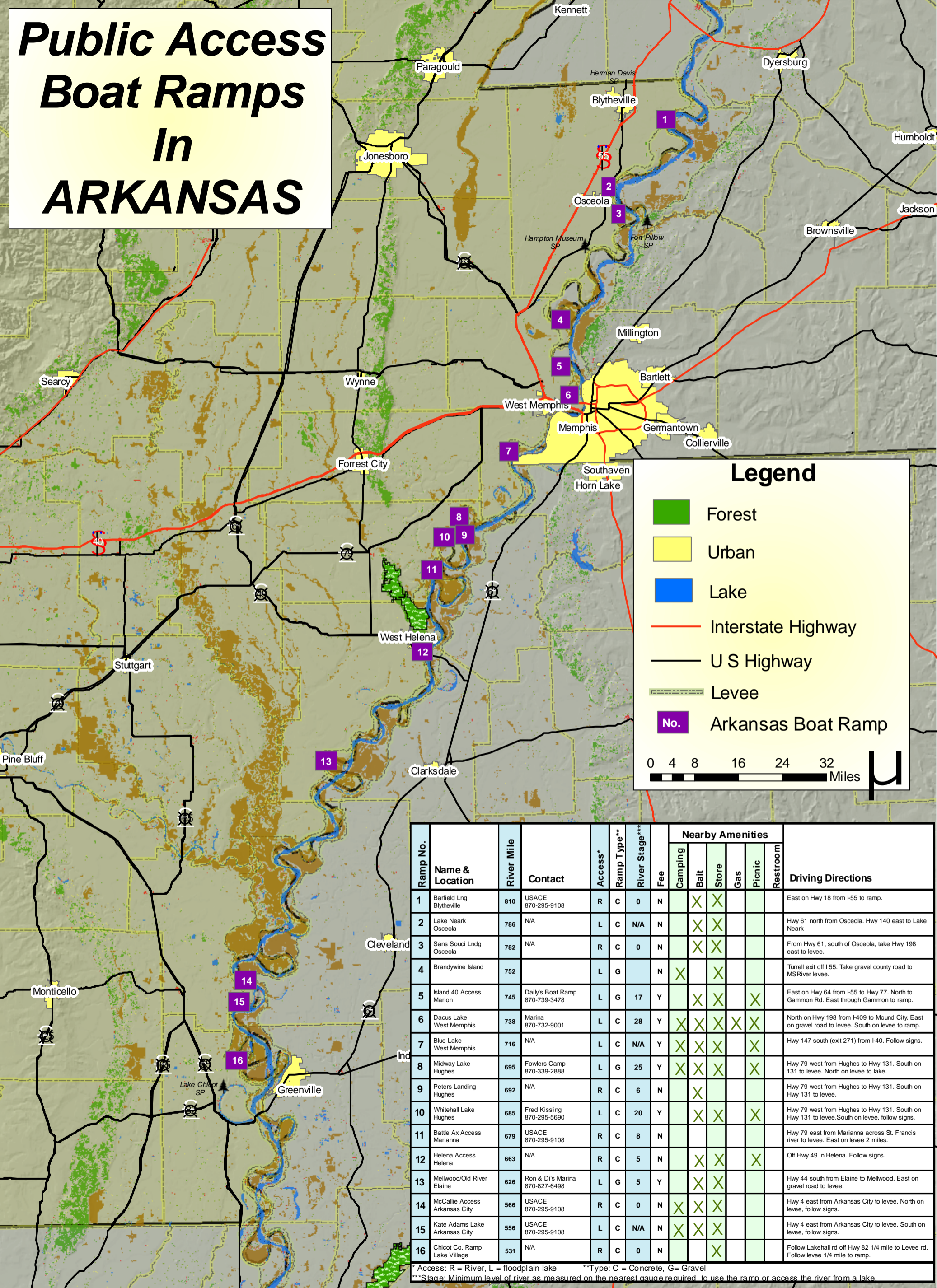


Public Access Boat Ramps In ARKANSAS



Legend

- Forest
- Urban
- Lake
- Interstate Highway
- U S Highway
- Levee
- No. Arkansas Boat Ramp

0 4 8 16 24 32 Miles

Ramp No.	Name & Location	River Mile	Contact	Access*	Ramp Type**	River Stage***	Fee	Nearby Amenities					Driving Directions
								Camping	Bait	Store	Gas	Picnic	
1	Barfield Lng Blytheville	810	USACE 870-295-9108	R	C	0	N	X	X				East on Hwy 18 from I-55 to ramp.
2	Lake Neark Osceola	786	N/A	L	C	N/A	N	X	X				Hwy 61 north from Osceola. Hwy 140 east to Lake Neark
3	Sans Souci Lndg Osceola	782	N/A	R	C	0	N	X	X				From Hwy 61, south of Osceola, take Hwy 198 east to levee.
4	Brandywine Island	752		L	G		N	X		X			Turrell exit off I-55. Take gravel county road to MSRiver levee.
5	Island 40 Access Marion	745	Daily's Boat Ramp 870-739-3478	L	G	17	Y		X	X		X	East on Hwy 64 from I-55 to Hwy 77. North to Gammon Rd. East through Gammon to ramp.
6	Dacus Lake West Memphis	738	Marina 870-732-9001	L	C	28	Y	X	X	X	X	X	North on Hwy 198 from I-409 to Mound City. East on gravel road to levee. South on levee to ramp.
7	Blue Lake West Memphis	716	N/A	L	C	N/A	Y	X	X	X		X	Hwy 147 south (exit 271) from I-40. Follow signs.
8	Midway Lake Hughes	695	Fowlers Camp 870-339-2888	L	G	25	Y	X	X	X		X	Hwy 79 west from Hughes to Hwy 131. South on 131 to levee. North on levee to lake.
9	Peters Landing Hughes	692	N/A	R	C	6	N		X				Hwy 79 west from Hughes to Hwy 131. South on Hwy 131 to levee.
10	Whitehall Lake Hughes	685	Fred Kissling 870-295-5690	L	C	20	Y		X	X		X	Hwy 79 west from Hughes to Hwy 131. South on Hwy 131 to levee. South on levee, follow signs.
11	Battle Ax Access Marianna	679	USACE 870-295-9108	R	C	8	N						Hwy 79 east from Marianna across St. Francis river to levee. East on levee 2 miles.
12	Helena Access Helena	663	N/A	R	C	5	N		X	X		X	Off Hwy 49 in Helena. Follow signs.
13	Mellwood/Old River Elaine	626	Ron & Di's Marina 870-827-6498	L	G	5	Y		X	X			Hwy 44 south from Elaine to Mellwood. East on gravel road to levee.
14	McCallie Access Arkansas City	566	USACE 870-295-9108	R	C	0	N	X	X	X			Hwy 4 east from Arkansas City to levee. North on levee, follow signs.
15	Kate Adams Lake Arkansas City	556	USACE 870-295-9108	L	C	N/A	N	X	X	X			Hwy 4 east from Arkansas City to levee. South on levee, follow signs.
16	Chicot Co. Ramp Lake Village	531	N/A	R	C	0	N			X			Follow Lakehall rd off Hwy 82 1/4 mile to Levee rd. Follow levee 1/4 mile to ramp.

* Access: R = River, L = floodplain lake **Type: C = Concrete, G = Gravel
 ***Stage: Minimum level of river as measured on the nearest gauge required to use the ramp or access the river from a lake.